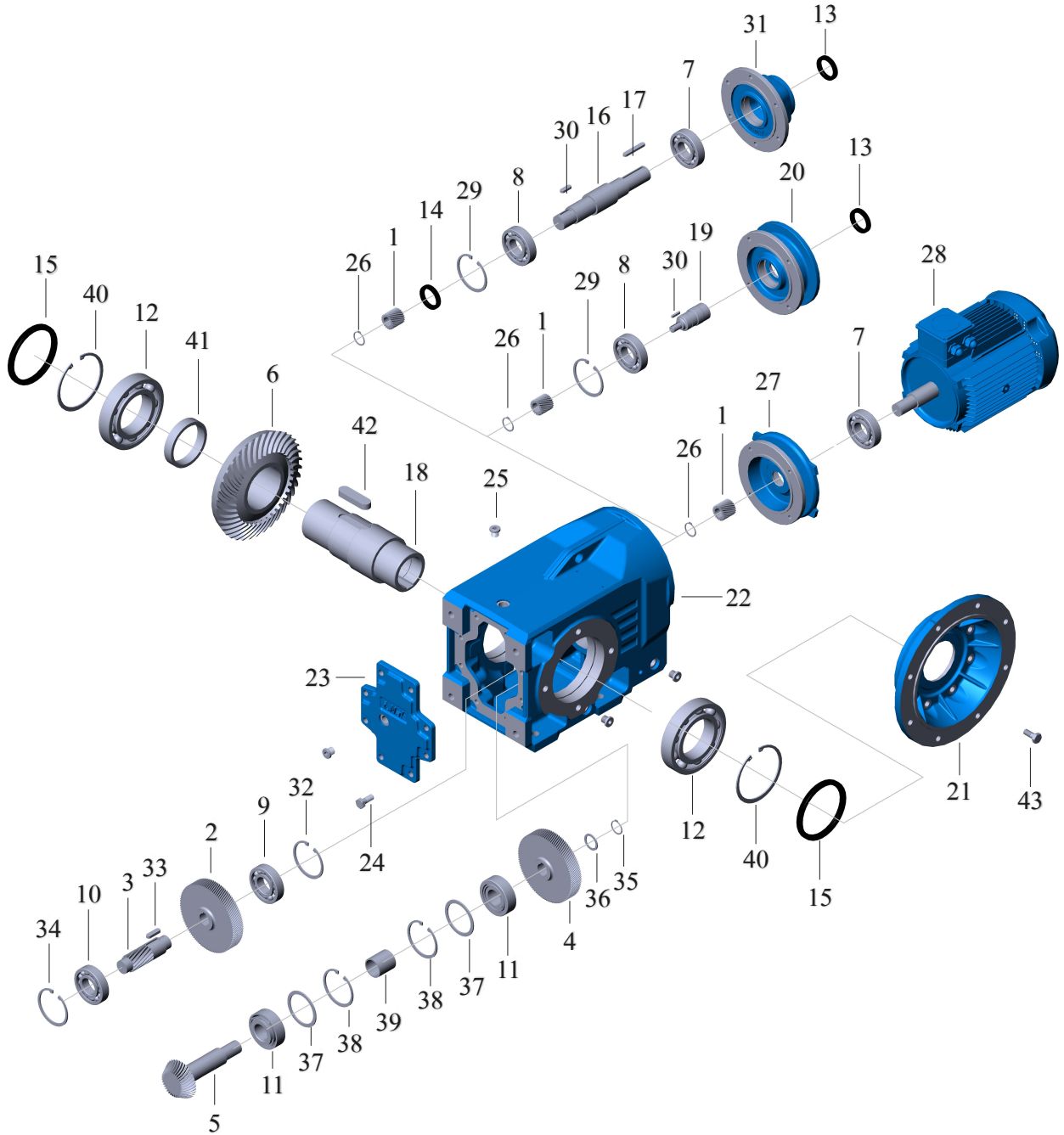
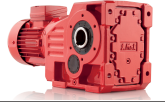


**TİP / TYPE****İRKM - İRKPM - İRKP - İRK****İRKFM - İRKFPM - İRKFP - İRKF**

} 43-42-53-52



**TİP / TYPE****İRKM / İRKPM / İRKFM / İRKPFM } 43-42-53-52**
İRK / İRKP / İRKF / İRKFP }

1 - Dişli Z1	1 - Gear Z1	1 - Pignon Z1
2 - Dişli Z2	2 - Gear Z2	2 - Pignon Z2
3 - Milli Dişli Z3	3 - Gear Z3	3 - Pignon Z3
4 - Dişli Z4	4 - Gear Z4	4 - Pignon Z4
5 - Pinyon Z5	5 - Pinion Shaft Z5	5 - Pignon Z5
6 - Ayna Dişlisi Z6	6 - Gear Wheel Z6	6 - Pignon Z6
7 - Rulman	7 - Bearing	7 - Roulement
8 - Rulman	8 - Bearing	8 - Roulement
9 - Rulman	9 - Bearing	9 - Roulement
10 - Rulman	10 - Bearing	10 - Roulement
11 - Rulman	11 - Bearing	11 - Roulement
12 - Rulman	12 - Bearing	12 - Roulement
13 - Keçe	13 - Seal	13 - Joint
14 - Keçe	14 - Seal	14 - Joint
15 - Keçe	15 - Seal	15 - Joint
16 - Giriş Mili	16 - Input Shaft	16 - Antriebswelle
17 - Kama	17 - Key	17 - Clavette
18 - Kovan	18 - Hollow Shaft	18 - Arbre creux
19 - Ara Bağlantı Mili	19 - Connection Shaft	19 - Arbre connecteur
20 - Pam Flanş (IEC)	20 - IEC Flange	20 - Bridge IEC
21 - Flanş	21 - Flange	21 - Bridge
22 - Gövde	22 - Gear Case	22 - Carter
23 - Kapak	23 - Cover	23 - Couvercle
24 - Cıvata	24 - Bolt	24 - Vis
25 - Yağ Tapası	25 - Oil Plug	25 - Bouchon d'huile
26 - Segman	26 - Circlip	26 - Circlip
27 - Motor Bağlantı Kapağı	27 - Motor Mounting Adapter	27 - Bride moteur
28 - Motor	28 - Electric Motor	28 - Moteur électrique
29 - Segman	29 - Circlip	29 - Circlip
30 - Kama	30 - Key	30 - Clavette
31 - Motorsuz Kapak	31 - Gear Case Cover	31 - Antriebsdeckel
32 - Segman	32 - Circlip	32 - Circlip
33 - Kama	33 - Key	33 - Clavette
34 - Segman	34 - Circlip	34 - Circlip
35 - Segman	35 - Circlip	35 - Circlip
36 - Pul	36 - Washer	36 - Joint
37 - Pul	37 - Washer	37 - Joint
38 - Segman	38 - Circlip	38 - Circlip
39 - Burç	39 - Spacer	39 - Anneau d'espacement
40 - Segman	40 - Circlip	40 - Circlip
41 - Burç	41 - Spacer	41 - Anneau d'espacement
42 - Kama	42 - Key	42 - Clavette
43 - Cıvata	43 - Bolt	43 - Vis