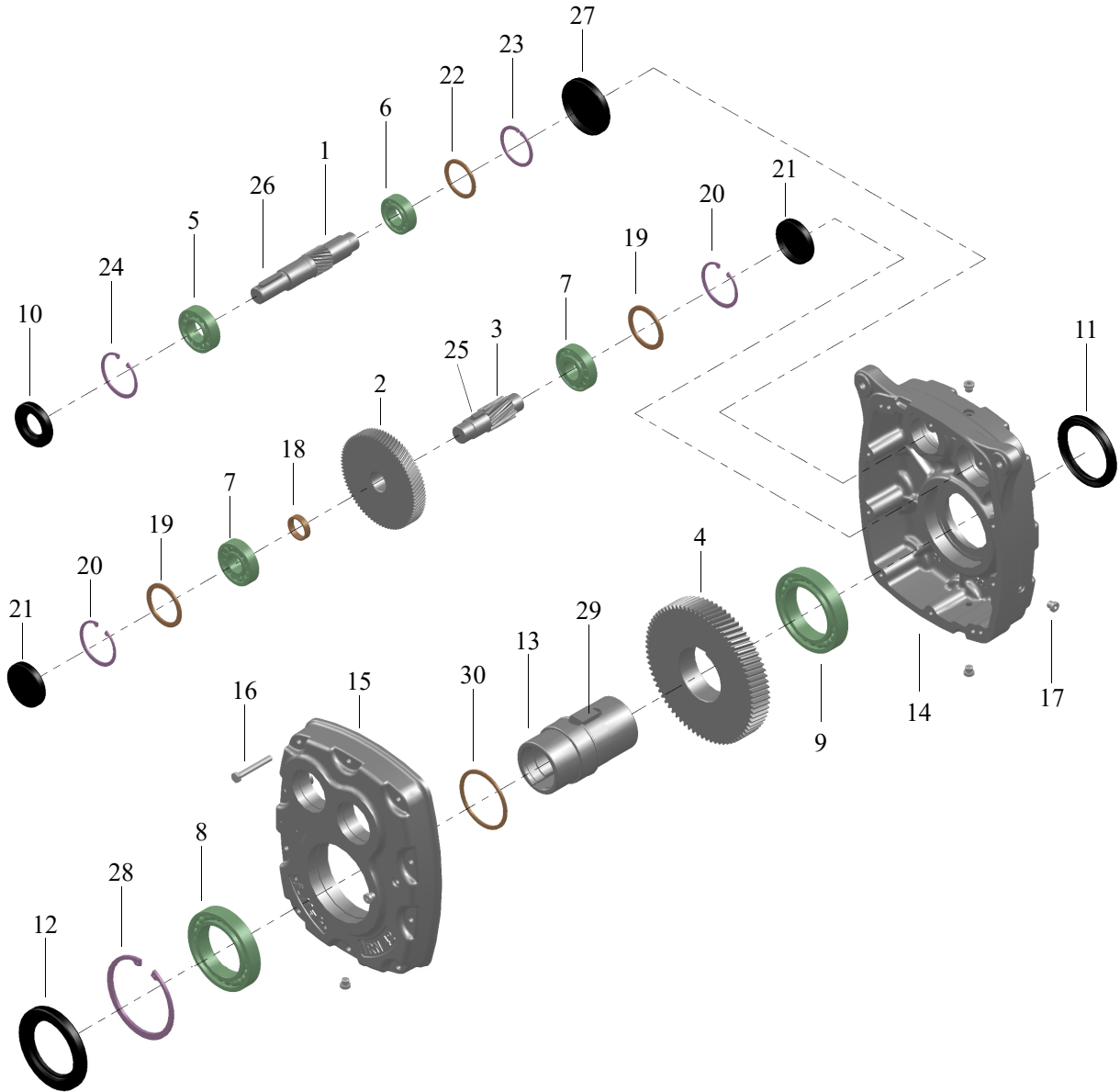


**TİP / TYPE / TYP****İRİN } 32-42-52-62-72-82**

**TİP / TYPE / TYP****İRİN } 32-42-52-62-72-82**

<b>1 - Dişli Z1 (Giriş Mili)</b>	1 - Gear Z1 (Input Shaft)	1 - Pignon Z1
<b>2 - Dişli Z2</b>	2 - Gear Z2	2 - Pignon Z2
<b>3 - Milli Dişli Z3</b>	3 - Gear Z3	3 - Pignon Z3
<b>4 - Dişli Z4</b>	4 - Gear Z4	4 - Pignon Z4
<b>5 - Rulman</b>	5 - Bearing	5 - Roulement
<b>6 - Rulman</b>	6 - Bearing	6 - Roulement
<b>7 - Rulman</b>	7 - Bearing	7 - Roulement
<b>8 - Rulman</b>	8 - Bearing	8 - Roulement
<b>9 - Rulman</b>	9 - Bearing	9 - Roulement
<b>10 - Keçe</b>	10 - Seal	10 - Joint
<b>11 - Keçe</b>	11 - Seal	11 - Joint
<b>12 - Keçe</b>	12 - Seal	12 - Joint
<b>13 - Kovan</b>	13 - Hollow Shalt	13 - Arbre creux
<b>14 - Gövde</b>	14 - Gear Case	14 - Carter
<b>15 - Kapak</b>	15 - Cover	15 - Couvercle
<b>16 - Cıvata</b>	16 - Bolt	16 - Vis
<b>17 - Yağ Tapası</b>	17 - Oil Plug	17 - Bouchon d'huile
<b>18 - Burç</b>	18 - Spacer	18 - Anneau d'espacement
<b>19 - Pul</b>	19 - Washer	19 - Joint
<b>20 - Segman</b>	20 - Circlip	20 - Circlip
<b>21 - Tapa</b>	21 - Locking Cover	21 - Bouchon
<b>22 - Pul</b>	22 - Washer	22 - Joint
<b>23 - Segman</b>	23 - Circlip	23 - Circlip
<b>24 - Segman</b>	24 - Circlip	24 - Circlip
<b>25 - Kama</b>	25 - Key	25 - Clavette
<b>26 - Kama</b>	26 - Key	26 - Clavette
<b>27 - Tapa</b>	27 - Locking Cover	27 - Bouchon
<b>28 - Segman</b>	28 - Circlip	28 - Circlip
<b>29 - Kama</b>	29 - Key	29 - Clavette
<b>30 - Pul</b>	30 - Washer	30 - Joint