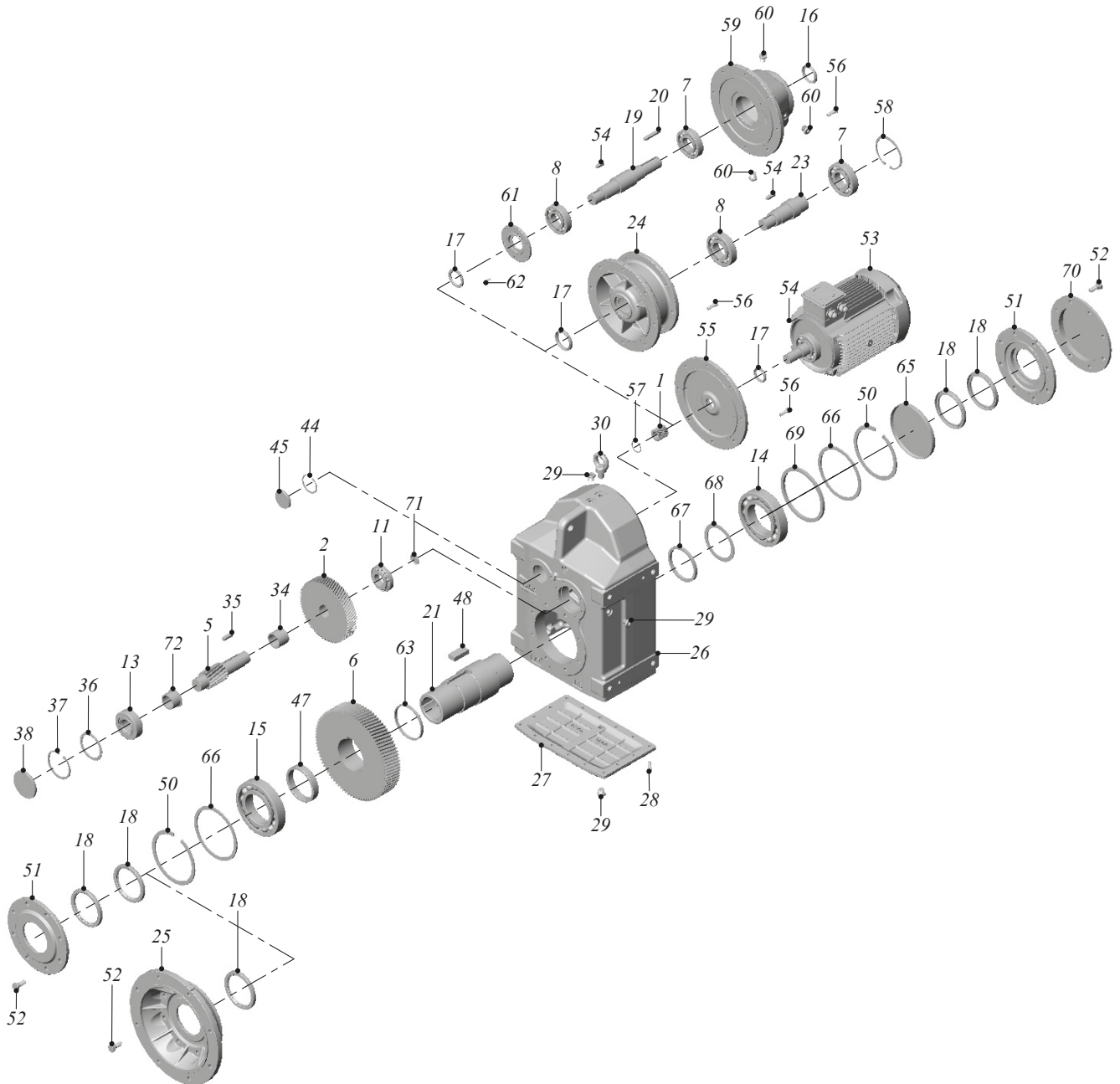


**TİP / TYPE / TYP****YPM - YPPM - YP - YPP****YPFM - YPPFM - YPF - YPPF**

52-62-72-82-92-102-122-142 152



**TİP / TYPE****YPM / YPPM / YP / YPP**

52-62-72-82-92-102-122-142 152

YPFM / YPFPM / YPF / YFPF

| | | |
|----------------------------|-----------------------------|--------------------------|
| 1 - Dişli Z1 | 1 - Gear Z1 | 1 - Pignon Z1 |
| 2 - Dişli Z2 | 2 - Gear Z2 | 2 - Pignon Z2 |
| 5 - Milli Dişli Z3 | 5 - Gear Z3 | 5 - Pignon Z3 |
| 6 - Dişli Z4 | 6 - Gear Z4 | 6 - Pignon Z4 |
| 11 - Rulman | 11 - Bearing | 11 - Roulement |
| 13 - Rulman | 13 - Bearing | 13 - Roulement |
| 14 - Rulman | 14 - Bearing | 14 - Roulement |
| 15 - Rulman | 15 - Bearing | 15 - Roulement |
| 16 - Keçe | 16 - Seal | 16 - Joint |
| 17 - Keçe | 17 - Seal | 17 - Joint |
| 18 - Keçe | 18 - Seal | 18 - Joint |
| 19 - Giriş Mili | 19 - Input Shaft | 19 - Arbre d'entrée |
| 20 - Kama | 20 - Key | 20 - Clavette |
| 21 - Kovan | 21 - Hollow Shaft | 21 - Arbre creux |
| 23 - Ara Bağlantı Mili | 23 - Connection Shaft | 23 - Arbre connecteur |
| 24 - Pam Flanş (IEC) | 24 - IEC Flange | 24 - Bride IEC |
| 25 - Flanş | 25 - Flange | 25 - Bride |
| 26 - Gövde | 26 - Gear Case | 26 - Carter |
| 27 - Kapak | 27 - Cover | 27 - Couvercle |
| 28 - Cıvata | 28 - Bolt | 28 - Vis |
| 29 - Yağ Tapası | 29 - Oil Plug | 29 - Bouchon d'huile |
| 30 - Taşıma Kancası | 30 - Lifting Eye Bolt | 30 - Anneau de levage |
| 34 - Burç | 34 - Spacer | 34 - Anneau d'espacement |
| 35 - Kama | 35 - Key | 35 - Clavette |
| 36 - Pul | 36 - Washer | 36 - Joint |
| 37 - Segman | 37 - Circlip | 37 - Circlip |
| 38 - Tapa | 38 - Locking Cover | 38 - Bouchon |
| 44 - Segman | 44 - Circlip | 44 - Circlip |
| 45 - Tapa | 45 - Locking Cover | 45 - Bouchon |
| 47 - Burç | 47 - Spacer | 47 - Anneau d'espacement |
| 48 - Kama | 48 - Key | 48 - Clavette |
| 50 - Segman | 50 - Circlip | 50 - Circlip |
| 51 - Keçe Kapağı | 51 - Seal Cover | 51 - Joint |
| 52 - Cıvata | 52 - Bolt | 52 - Vis |
| 53 - Motor | 53 - Electric Motor | 53 - Moteur électrique |
| 54 - Kama | 54 - Key | 54 - Clavette |
| 55 - Motor Bağlantı Kapağı | 55 - Motor Mounting Adapter | 55 - Bride moteur |
| 56 - Cıvata | 56 - Bolt | 56 - Vis |
| 57 - Segman | 57 - Circlip | 57 - Circlip |
| 58 - Segman | 58 - Circlip | 58 - Circlip |
| 59 - Motorsuz Kapak | 59 - Input cover | 59 - Bride d'entrée |
| 60 - Yağ Tapası | 60 - Oil Plug | 60 - Bouchon d'huile |
| 61 - Keçe Kapağı | 61 - Seal Cover | 61 - Joint |
| 62 - Cıvata | 62 - Bolt | 62 - Vis |
| 63 - Burç | 63 - Spacer | 63 - Anneau d'espacement |
| 65 - Tapa | 65 - Locking Cover | 65 - Bouchon |
| 66 - Pul | 66 - Washer | 66 - Joint |
| 67 - Burç | 67 - Spacer | 67 - Anneau d'espacement |
| 68 - Pul | 68 - Washer | 68 - Joint |
| 69 - Burç | 69 - Spacer | 69 - Anneau d'espacement |
| 70 - Toz Kapağı | 70 - Hood Cover | 70 - Couvercle |
| 71 - Tapa | 71 - Locking Cover | 71 - Bouchon |
| 72 - Burç | 72 - Spacer | 72 - Anneau d'espacement |