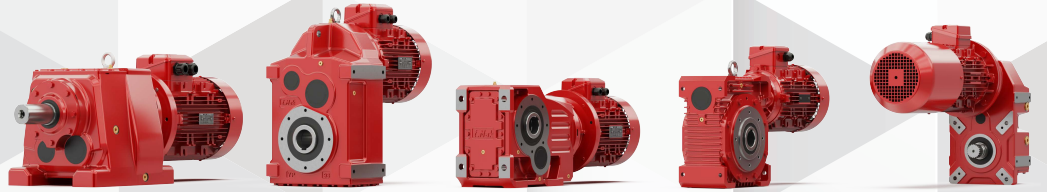




## Sektöre özel güçlü çözümler

B09

TR / EN



Redüktör ve Varyatör / Gearboxes and Drives

**Uygulama Sektörleri**  
*Applications Sector*



**Çelik**  
*Steel*



**Maden ve Taş Ocakları**  
*Mines and Quarries*



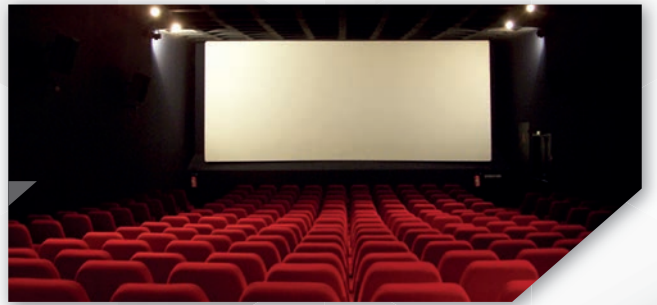
**Gaz ve Petrol**  
*Gas and Petroleum*



**Deniz**  
*Marine*



**Su Arıtma Tesisi**  
*Water Treatment*



**Sahne ve Tiyatro**  
*Stage and Theater*



**Yiyecek ve İçecek**  
*Food and Beverage*



**Tarım ve Ormancılık**  
*Agriculture and Forestry*

Tip Type	Moment (Max) Torque (Max)	Mil Çapı Shaft Diameter
IR...42-43	90 Nm	Ø 20
IR...52-53	190 Nm	Ø 25
IR...621-631-641	300 Nm	Ø 30
IR...62-63-64	400 Nm	Ø 35
IR...721-731-741	600 Nm	Ø 35
IR...72-73-74	850 Nm	Ø 40
IR...82-83-84	1440 Nm	Ø 50
IR...92-93-94	3000 Nm	Ø 60
IR...102-103-104	4300 Nm	Ø 70
IR...122-123-124	8000 Nm	Ø 90
IR...142-143-144	13000 Nm	Ø 110
IR...152-153-154	18000 Nm	Ø 120

**Helisel dişlil redüktörler**  
*Helical geared motor*  
**IR Serisi / IR Series**



**Devir Aralığı / Speed Range**

2,4 d/d ... 852 d/d

**Motor Güç Aralığı / Applicable Motor Power**

0,12 kW...160 kW

**Giriş Opsiyonları / Input Options**

**Motorsuz / Without motor**

**Motorsuz, PAM Flanşlı / Without motor, with PAM flange**

**Motorlu / With motor**

**Motorlu, PAM Flanşlı / With motor, with PAM flange**

Tip Type	Moment (Max) Torque (Max)	Mil Çapı Shaft Diameter
IRK...42-43	180 Nm	Ø 30
IRK...52-53	220 Nm	Ø 30
IRK...63	400 Nm	Ø 35
IRK...73-74	780 Nm	Ø 40
IRK...83-84	1330 Nm	Ø 50
IRK...93-94	2572 Nm	Ø 60
IRK...103-104	4010 Nm	Ø 70
IRK...123-124	8000 Nm	Ø 90
IRK...143-144	13000 Nm	Ø 110
IRK...153-154	18000 Nm	Ø 120

**Helisel konik dişlil redüktörler**  
*Helical bevel geared motor*  
**IRK Serisi / IRK Series**



**Devir Aralığı / Speed Range**

0,17 d/d...214 d/d

**Motor Güç Aralığı / Applicable Motor Power**

0,12 kW...200 kW

**Giriş Opsiyonları / Input Options**

**Motorsuz / Without motor**

**Motorsuz, PAM Flanşlı / Without motor, with PAM flange**

**Motorlu / With motor**

**Motorlu, PAM Flanşlı / With motor, with PAM flange**

Tip Type	Moment (Max) Torque (Max)	Mil Çapı Shaft Diameter
YP...42-43	130 Nm	Ø 25
YP...52-53	200 Nm	Ø 30
YP...62-63	400 Nm	Ø 35
YP...72-73-74	820 Nm	Ø 40
YP...82-83-84	1500 Nm	Ø 50
YP...92-93-94	3000 Nm	Ø 60
YP...102-103-104	4300 Nm	Ø 70
YP...122-123-124	7800 Nm	Ø 90
YP...142-143-144	13000 Nm	Ø 110
YP...152-153-154	18000 Nm	Ø 120

**Paralel millil redüktörler**  
*Parallel shaft helical geared motor*  
**YP Serisi / YP Series**



**Devir Aralığı / Speed Range**

2,4 d/d ... 391 d/d

**Motor Güç Aralığı / Applicable Motor Power**

0,12 kW...200 kW

**Giriş Opsiyonları / Input Options**

**Motorsuz / Without motor**

**Motorsuz, PAM Flanşlı / Without motor, with PAM flange**

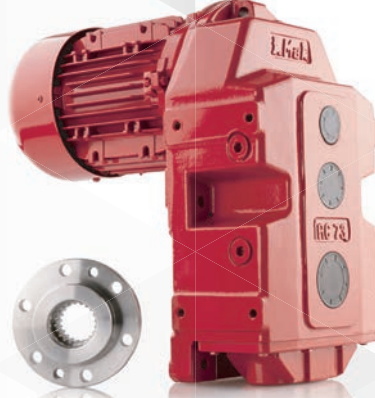
**Motorlu / With motor**

**Motorlu, PAM Flanşlı / With motor, with PAM flange**

Sektöre özel güçlü çözümler  
Driven by passion

Tip Type	Moment (Max) Torque (Max)	Mil Çapı Shaft Diameter
IRC 63	350 Nm	Ø 35
IRC 73	800 Nm	Ø 45
IRC 83	1500 Nm	Ø 50
IRC 93	3500 Nm	Ø 70
IRC 103	7500 Nm	Ø 95
IRC 123	10400 Nm	Ø 110
IRC 143	19200 Nm	Ø 120

Kaldırma grubu (vinç) redüktörler  
Hoist drive gearbox  
IRC Serisi / IRC Series



Devir Aralığı / Speed Range

7 d/d...59 d/d

Motor Güç Aralığı / Applicable Motor Power

0,37 kW...90 kW

Giriş Opsiyonları / Input Options

Motorsuz / Without motor

Motorsuz, PAM Flanşlı / Without motor, with PAM flange

Motorlu / With motor

Motorlu, PAM Flanşlı / With motor, with PAM flange

Tip Type	Moment (Max) Torque (Max)	Mil Çapı Shaft Diameter
MA 402-403	6080 Nm	Ø 80
MA 502-503	10300 Nm	Ø 95
MA 602-603	12900 Nm	Ø 105
MA 702-703-704	19400 Nm	Ø 115
MA 802-803-804	24100 Nm	Ø 125
MA 902-903-904	29930 Nm	Ø 135
MA 1002-1003-1004	36000 Nm	Ø 150
MA 1102-1103-1104	50000 Nm	Ø 165
MA 1202-1203-1204	70000 Nm	Ø 180

Monoblok ağır hizmet tipi redüktörler  
Monoblock industrial gear unit  
MA - MK Serisi / MA - MK Series



Tip Type	Moment (Max) Torque (Max)	Mil Çapı Shaft Diameter
MK 403-404	6100 Nm	Ø 80
MK 503-504	10300 Nm	Ø 95
MK 603-604	12900 Nm	Ø 105
MK 703-704	19400 Nm	Ø 115
MK 803-804	22520 Nm	Ø 125
MK 903-904	29530 Nm	Ø 135
MK 1003-1004	37580 Nm	Ø 150
MK 1103-1104	50000 Nm	Ø 165
MK 1203-1204	70000 Nm	Ø 180

Tahvil Aralığı / Range of Ratios

6,028 .... 423,479

Motor Güç Aralığı / Applicable Motor Power

2,2 kW...560 kW

Tahvil Aralığı / Range of Ratios

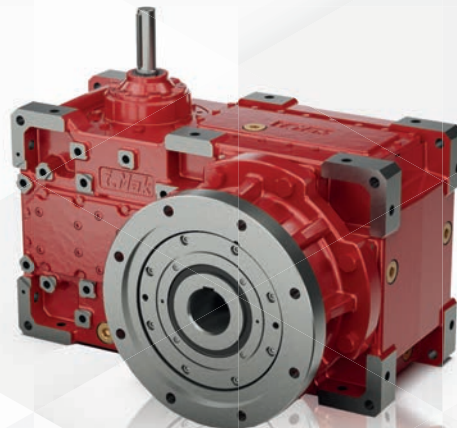
15,674 .... 511,760

Motor Güç Aralığı / Applicable Motor Power

0,55 kW...315 kW

Tip Type	Moment (Max) Torque (Max)	Mil Çapı Shaft Diameter
MAE 402-403	6080 Nm	Ø 60
MAE 502-503	10300 Nm	Ø 70
MAE 602-603	12900 Nm	Ø 80
MAE 702-703-704	19400 Nm	Ø 90
MAE 802-803-804	24100 Nm	Ø 100
MAE 902-903-904	29930 Nm	Ø 110
MAE 1002-1003-1004	36000 Nm	Ø 120
MAE 1102-1103-1104	50000 Nm	Ø 130
MAE 1202-1203-1204	70000 Nm	Ø 140

Monoblok ekstrüder redüktörler  
Monoblock extruder gear units  
Monoblok MAE Serisi / Monoblock MAE Series



Tip Type	Moment (Max) Torque (Max)	Mil Çapı Shaft Diameter
MKE 403-404	6100 Nm	Ø 60
MKE 503-504	10300 Nm	Ø 70
MKE 603-604	12900 Nm	Ø 80
MKE 703-704	19400 Nm	Ø 90
MKE 803-804	22520 Nm	Ø 100
MKE 903-904	29530 Nm	Ø 110
MKE 1003-1004	37580 Nm	Ø 120
MKE 1103-1104	50000 Nm	Ø 130
MKE 1203-1204	70000 Nm	Ø 140

Tahvil Aralığı / Range of Ratios

6,028 .... 423,479

Motor Güç Aralığı / Applicable Motor Power

2,2 kW...560 kW

Tahvil Aralığı / Range of Ratios

15,674 .... 511,760

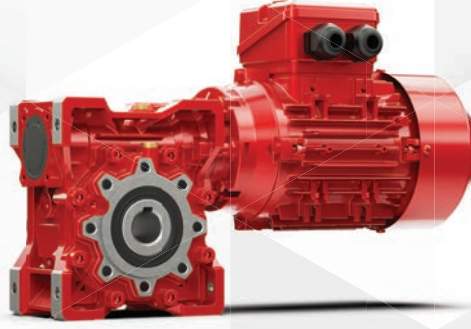
Motor Güç Aralığı / Applicable Motor Power

0,55 kW...315 kW

Hareket alanınızı genişletiyoruz  
We widen your motion area

Tip Type	Moment (Max) Torque (Max)	Mil Çapı Shaft Diameter
S...30	21 Nm	Ø 14
S...40	42 Nm	Ø 18
S...50	71 Nm	Ø 25
S...63	145 Nm	Ø 25
S...75	221 Nm	Ø 28
S...90	400 Nm	Ø 35
S...110	700 Nm	Ø 42
S...130	1000 Nm	Ø 45
S...150	1500 Nm	Ø 50

**Alüminyum gövdeli sonsuz vidalı redüktörler**  
*Aluminium housing worm geared motor*  
**S Serisi / S Series**



**Tahvil Aralığı / Range of Ratios**

7,5 ....100

**Motor Güç Aralığı / Applicable Motor Power**

0,12 kW...15 kW

**Giriş Opsiyonları / Input Options**

**Motorsuz / Without motor**

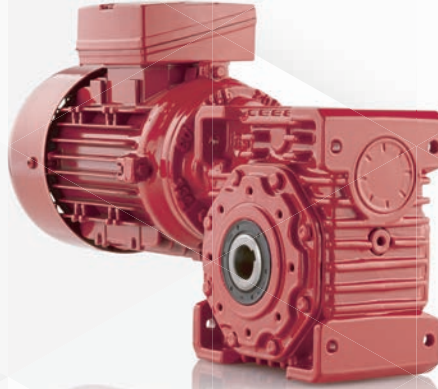
**Motorsuz, PAM Flanşlı / Without motor, with PAM flange**

**Motorlu / With motor**

**Motorlu, PAM Flanşlı / With motor, with PAM flange**

Tip Type	Moment (Max) Torque (Max)	Mil Çapı Shaft Diameter
IRS...52	240 Nm	Ø 20
IRS...65	415 Nm	Ø 25
IRS...82	825 Nm	Ø 30
IRS...102	1465 Nm	Ø 40
IRS...127	2650 Nm	Ø 50
IRS...162	4820 Nm	Ø 70
IRS...201	7200 Nm	Ø 80
IRS...250	12500 Nm	Ø 90

**Sonsuz vidalı redüktörler**  
*Worm geared motor*  
**IRS Serisi / IRS Series**



**Tahvil Aralığı / Range of Ratios**

7,5 ....111

**Motor Güç Aralığı / Applicable Motor Power**

0,12 kW...22 kW

**Giriş Opsiyonları / Input Options**

**Motorsuz / Without motor**

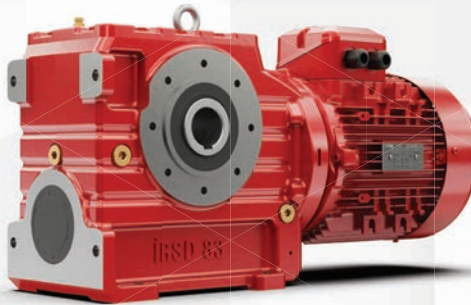
**Motorsuz, PAM Flanşlı / Without motor, with PAM flange**

**Motorlu / With motor**

**Motorlu, PAM Flanşlı / With motor, with PAM flange**

Tip Type	Moment (Max) Torque (Max)	Mil Çapı Shaft Diameter
IRSD...43	125 Nm	Ø 20
IRSD...53	415 Nm	Ø 25
IRSD...63	825 Nm	Ø 30
IRSD...73	1465 Nm	Ø 40
IRSD...83	2650 Nm	Ø 50
IRSD...161	4820 Nm	Ø 70

**Helisel sonsuz vidalı redüktörler**  
*Helical - Worm geared motor*  
**IRSD Serisi / IRSD Series**



**Tahvil Aralığı / Range of Ratios**

1/20 .... 1/429

**Motor Güç Aralığı / Applicable Motor Power**

0,12 kW...11 kW

**Giriş Opsiyonları / Input Options**

**Motorsuz / Without motor**

**Motorsuz, PAM Flanşlı / Without motor, with PAM flange**

**Motorlu / With motor**

**Motorlu, PAM Flanşlı / With motor, with PAM flange**

**Kovan montajlı redüktörler**  
*Shaft mounted gear unit*

**IRO Serisi**  
*IRO Series*



**IRNX Serisi**  
*IRNX Series*



**Tahvil Aralığı (IRO) / Range of Ratios**

5 ... 30

**Motor Güç Aralığı (IRO) / Applicable Motor Power**

2,2 kW ... 160 kW

Tip Type	Moment (Max) Torque (Max)	Mil Çapı Shaft Diameter
IRO 41-42	930 Nm	Ø 45
IRO 51-52	1400 Nm	Ø 50
IRO 61-62	2700 Nm	Ø 60
IRO 71-72	5000 Nm	Ø 70
IRO 81-82	7530 Nm	Ø 100

**Tahvil Aralığı (IRNX) / Range of Ratios**

5 ... 30

**Motor Güç Aralığı (IRNX) / Applicable Motor Power**

0,55 kW...450 kW

Tip Type	Moment (Max) Torque (Max)	Mil Çapı Shaft Diameter
IRNX 01	515 Nm	Ø 30
IRNX 02	815 Nm	Ø 40
IRNX 03	1290 Nm	Ø 50
IRNX 04	1800 Nm	Ø 50
IRNX 05	3160 Nm	Ø 60
IRNX 06	4690 Nm	Ø 70
IRNX 07	7460 Nm	Ø 85
IRNX 08	9920 Nm	Ø 100
IRNX 09	12420 Nm	Ø 120
IRNX 10	17900 Nm	Ø 125
IRNX 11	24460 Nm	Ø 150
IRNX 12	42700 Nm	Ø 190

**Planet redüktörler**  
*Planetary gear units*

**IPR Serisi**  
*IPR Series*



**IPRK Serisi**  
*IPRK Series*



Tip Type	Moment (Max) Torque (Max)	Mil Çapı Shaft Diameter
IPR/IPRK 101	1100 Nm	Ø 42
IPR/IPRK 103	1700 Nm	Ø 42
IPR/IPRK 105	3520 Nm	Ø 65
IPR/IPRK 107	5110 Nm	Ø 65
IPR/IPRK 109	7020 Nm	Ø 80
IPR/IPRK 111	12210 Nm	Ø 90
IPR/IPRK 113	18020 Nm	Ø 90
IPR/IPRK 115	18020 Nm	Ø 90
IPR/IPRK 117	30760 Nm	Ø 110
IPR/IPRK 119	30760 Nm	Ø 110
IPR/IPRK 121	37500 Nm	Ø 120
IPR/IPRK 123	60800 Nm	Ø 140
IPR/IPRK 125	69310 Nm	Ø 160
IPR/IPRK 127	99000 Nm	Ø 170
IPR/IPRK 129	140900 Nm	Ø 180
IPR/IPRK 131	184000 Nm	Ø 230
IPR/IPRK 133	215000 Nm	Ø 230
IPR/IPRK 135	332800 Nm	Ø 295

**Tahvil Aralığı / Range of Ratios**

3 ... 9793

**Motor Güç Aralığı / Applicable Motor Power**

0,25 kW...500 kW

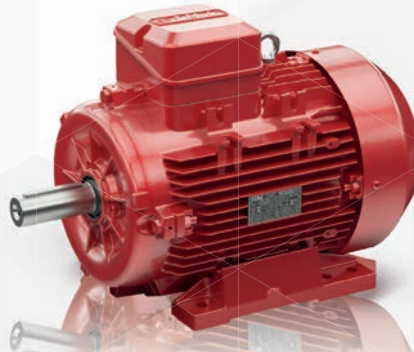
**Giriş Opsiyonları / Input Options**

**Motoruz / Without motor**

**Motoruz, PAM Flanşlı / Without motor, with PAM flange**

**Motorlu, PAM Flanşlı / With motor, with PAM flange**

**Asenkron motor**  
*Asynchronous motor*



Gövde Büyüklükleri Frame Size	Kutup Sayısı Number of Pole
63	2-4
71	2-4-6-8
80	2-4-6-8
90	2-4-6-8
100	2-4-6-8
112	2-4-6-8
132	2-4-6-8
160	2-4-6-8
180	2-4-6-8
200	2-4-6-8
225	2-4-6
250	2-4-6
280	2-4-6
315	2-4-6
355	2-4-6

**Bağlantı Seçenekleri / Connection Options**

B3 - B5 - B14 - B35 - NEMA C Face

**Verimlilik Seçenekleri / Efficiency Options**

IE2 - IE3 - IE4

**Koruma Seçenekleri / Protection Options**

IP55 - IP56 - IP65 - IP66

**Ağır hizmet tipi redüktörler**  
*Industrial gear units*  
**A Serisi / A Series**

Tip Type	Moment (Max) Torque (Max)	Mil Çapı Shaft Diameter
2A 180	880 Nm	Ø 45
2A 225	2040 Nm	Ø 55
2A 275	4107 Nm	Ø 65
2A 351	8000 Nm	Ø 90
2A 430	17000 Nm	Ø 105
2A 501	27000 Nm	Ø 120

**Tahvil Aralığı**  
*Range of Ratios*

3,6 .... 48

**Motor Güç Aralığı**  
*Applicable Motor Power*

0,37 kW...160 kW



Tip Type	Moment (Max) Torque (Max)	Mil Çapı Shaft Diameter
3A 351	8000 Nm	Ø 90
3A 430	17000 Nm	Ø 105
3A 501	27000 Nm	Ø 120
3A 750	33000 Nm	Ø 140
4A 750	33000 Nm	Ø 140

**Tahvil Aralığı**  
*Range of Ratios*

7,6 .... 487

**Motor Güç Aralığı**  
*Applicable Motor Power*

0,37 kW...160 kW

**Extruder tipi redüktörler**  
*Extruder type industrial gear units*  
**AE Serisi / AE Series**

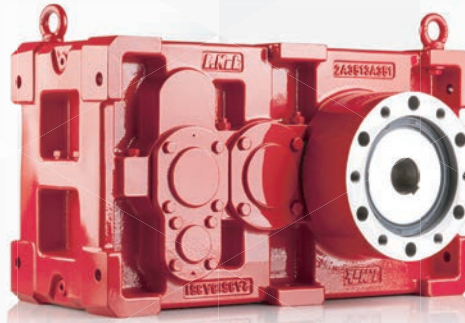
Tip Type	Moment (Max) Torque (Max)	Mil Çapı Shaft Diameter
2AE 225	2040 Nm	Ø 35
2AE 275	4107 Nm	Ø 40
2AE 351	8000 Nm	Ø 60
2AE 430	17000 Nm	Ø 70
2AE 501	27000 Nm	Ø 90

**Tahvil Aralığı**  
*Range of Ratios*

3,6 .... 48

**Motor Güç Aralığı**  
*Applicable Motor Power*

0,37 kW...160 kW



Tip Type	Moment (Max) Torque (Max)	Mil Çapı Shaft Diameter
3AE 351	8000 Nm	Ø 60
3AE 430	17000 Nm	Ø 70
3AE 501	27000 Nm	Ø 90
3AE 750	33000 Nm	Ø 115
4AE 750	33000 Nm	Ø 115

**Tahvil Aralığı**  
*Range of Ratios*

7,6 .... 487

**Motor Güç Aralığı**  
*Applicable Motor Power*

0,37 kW...160 kW

**Çift çıkış milli özel tip redüktörler**  
*Twin shaft gear units*

**AD - ADS - ADK Serisi / AD - ADS - ADK Series**

Tip Type	Moment (Max) Torque (Max)	Mil Çapı Shaft Diameter
ADS 185	1465 Nm	Ø 50
ADS 230	4820 Nm	Ø 80
Tip Type	Moment (Max) Torque (Max)	Mil Çapı Shaft Diameter
AD 180	300 Nm	Ø 30
AD 230	8000 Nm	Ø 80
AD 250	8000 Nm	Ø 80
Tip Type	Moment (Max) Torque (Max)	Mil Çapı Shaft Diameter
ADK 185	3400 Nm	Ø 50
ADK 185-1	2400 Nm	Ø 50



**Çıkış Milleri Arasındaki Tahvil Oranı /**  
*ADS 185 Difference of ratio between both shaft*

1,000  
1,044  
1,140  
1,244  
1,300  
1,359  
1,421  
1,486

**Çıkış Milleri Arasındaki Tahvil Oranı /**  
*ADS 230 Difference of ratio between both shaft*

1,000  
1,154  
1,240  
1,333  
1,435  
1,486

**ULUSLAR ARASI BAYI AĞI / A STRONG NETWORK**

**I-MAK Turkey (Factory-Head Office)**

Seyhli Mahallesi, Sanayi Caddesi No:1, 34906 Pendik / İstanbul –  
Turkey Tel: +90 216 378 03 26 - Fax: +90 216 378 06 86  
Web: [www.imakreduktor.com](http://www.imakreduktor.com) / E-mail: [imak@imakreduktor.com](mailto:imak@imakreduktor.com)

**I-MAK Morocco**

Quartier industriel SAPINO Lot n°72- Nouacer, Casablanca-Maroc  
Tel: +212 588 408 757 - Fax: +212 522 408 756  
E-mail: [adv@alamitec.ma](mailto:adv@alamitec.ma)

**I-MAK France**

Zac de Montrambert - piegot, 42150 La Ricamarie, France  
Tel: +33 (0)6 19 27 10 48  
E-mail: [transmission@unicum.fr](mailto:transmission@unicum.fr)

**I-MAK Ukraine**

Levanevs'koho St, 77, Bila Tserkva, Kyivs'ka oblast, Ukraine  
Tel: +38 044 221 18 89  
E-mail: [technoprivod@ymail.com](mailto:technoprivod@ymail.com)

**I-MAK Poland**

Kochlice ul. Lubińska 1C, Milkowice, 59-222 Kochlice, Poland  
Tel: +48 76 852 21 17  
E-mail : [service@iow.pl](mailto:service@iow.pl)

**I-MAK Ecuador**

Av.Francisco de Orellana Km 4.5 C.Comercial la Gran Manzana Local 70  
Bodega & Taller Cdla.Urbanor Mz. 107 Villa 29 Ecuador Guayaquil  
[stalin.espinoza@sercorpvi.com](mailto:stalin.espinoza@sercorpvi.com)

**I-MAK Colombia**

Calle 15 No. 2A - 38 Funza, Cundinamarca, Bogota / Colombia  
Tel: +57 (1) 8237752 - 8237736 - 3165233927  
E-mail: [info@motoresyenergia.com](mailto:info@motoresyenergia.com)

**I-MAK South Africa**

72 Acacia Road, Primrose,  
Germiston  
Tel: +27 11 828 9715 E-mail: [info@hpts.co.za](mailto:info@hpts.co.za)

**I-MAK Turkey (Sales Office)**

Demirkapi Mah. Riza Uzun Sok. D:5, 34030 Eyup / İstanbul –Turkey  
Tel: +90 212 567 87 32/33 - Fax: +90 212 612 61 17  
E-mail: [imak@imakreduktor.com](mailto:imak@imakreduktor.com) / [export@imakreduktor.com](mailto:export@imakreduktor.com)

**I-MAK USA**

12610 Galveston Road, Webster, 77598 Texas, USA.  
Tel: +1 281 480 8711 ext 200 / Fax: +1 281 480 8656  
E-mail: [sales@sipco-imak.com](mailto:sales@sipco-imak.com)

**I-MAK Italy**

Via Maestri del Lavoro 10/B 42122 Reggio Emilia Italy  
Tel: 0039 059 5961376  
E-mail: [imak.italy@imakreduktor.com](mailto:imak.italy@imakreduktor.com)

**I-MAK Netherlands**

Parlevinkerweg 44, 5928 NV Venlo, The Netherlands  
Tel: +31-77-3968781  
E-mail: [info@aandrijftechnischburo.nl](mailto:info@aandrijftechnischburo.nl)

**I-MAK India**

Indus Valley's Logistic Park Unit 3-Vellala Street, Chennai, India  
Tel: +91 4465681815  
E-mail: [info@mgmvarvelindia.com](mailto:info@mgmvarvelindia.com)

**I-MAK Russia**

142718 Moscow region. S.Bulatnikovskoe, building 1, office 404, Russia  
Tel: +7(499) 677 52 13 +7(929) 976 12 26 / +7(967) 130 49 63  
E-Mail : [info@imak.ru](mailto:info@imak.ru)

**I-MAK Spain**

Poligono Industrial A Reigosa Parcela B-33,  
36828 Ponte Caldelas, Pontevedra, España  
Tel: (+34) 986 872 010

**I-MAK Egypt**

Egypt - 6th October City – Laylat Al – Qadr Square – Almajed Center  
Tel: +20 102 454 6254 / +20 102 262 1584  
E-mail: [export@imakreduktor.com](mailto:export@imakreduktor.com)

**GÜVENİLİR BAYİLERİMİZ / TRUSTABLE PARTNERS**

Algeria / Argentina / Azerbaijan / Belarus / Bulgaria / Bosnia / Canada / China / Czech Republic / Dubai / Ecuador / Germany  
Hungary / Indonesia / Iraq / Ivory Coast / Jordan / Kazakhstan / Kenya / Malaysia / Mauritania / Mexico / Pakistan / Peru  
Romania / Saudi Arabia / Serbia / Slovakia / Spain / Sweden / Tunisia / Uzbekistan / Vietnam

[www.imakreduktor.com](http://www.imakreduktor.com)

**i.Guide**  
Product Selection Guide



American  
Gear Manufacturers  
Association